



Sales Manual 2024

GÖTTWEIG ABBEY



Benediktinerstift
GÖTTWEIG

The Benedictine Monks of Göttweig Abbey extend a warm welcome to all guests!



Splendid location above the
Wachau Region

Conspicuously the Benedictine Monastery sits enthroned – due to its magnificent hilltop position – 429m above sea level on the east edge of the world-famous Danube Valley and the Wachau. Göttweig Abbey situated on the Göttweig Mountain is – because of its location – sometimes called the "Austrian Montecassino". For centuries, the Göttweig Mountain offers to its visitors and inhabitants a place of encounter and a source of strength. Today the Abbey is not only the main attraction for guests and pilgrims (St. James Path) from all over the world, but also a spiritual center situated in the heart of Lower Austria.



Baroque Glory

At the museum, located inside the Imperial Wing, the visitor experiences the baroque glory of the royal court architect Johann Lucas von Hildebrandt, such as the monumental Emperor's Staircase with Paul Troger's ceiling fresco (1739), which is one of the most beautiful and impressive baroque staircases in Europe. A visit at the richly equipped Abbey Church is a touching experience for many visitors.



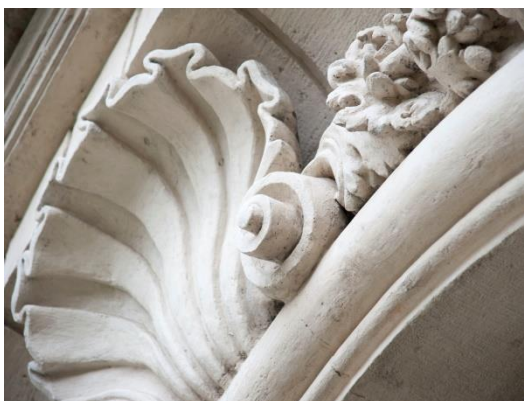
Cuisine with Panoramic View

Our Monastery's Restaurant delights you and your guests with local specialties, as well as with wines from the Monastery's Vineyards. The panoramic terrace offers a unique view over the Danube Valley and the Wachau Region.



To be a guest at the Monastery

For small groups up to 76 persons, Göttweig Abbey offers overnight accommodation with full board at the Monastery's Restaurant. Our basic rooms, full of atmosphere, partly with magnificent danube views and the impressive Benedict's Apartment invite you to extend your visit at our Monastery.



In detail

On the following pages we will give you all necessary information about Göttweig Abbey. If you have any further questions, we are pleased to be at your disposal under +43.(0)27 32.855 81-0.



We are looking forward to welcome you and your guests!

+ *Schubert*

Abbot Columban, Convent and Staff

Benediktinerstift Göttweig

Tel.: +43.(0)27 32.855 81-231

tourismus@stiftgoettweig.at

www.stiftgoettweig.at

CONTACT

| | |
|---|--|
| Tourist Office Museum in the Imperial Wing First Contact for Guests Monastery Concerts Special Guided Tours (Children & Youth Groups) | Mag. (FH) Eveline Gruber-Jansen and team Tel: +43.(0)27 32.855 81-231 Fax: +43.(0)27 32.855 81-244 e-mail: tourismus@stiftgoettweig.at Available from Monday to Friday, 10 a.m. to 5 p.m. |
| Accommodation “to be a guest of the monastery” | Martin Scherhag and the team of the reception area Tel: +43.(0)27 32.855 81-0 Fax: +43.(0)27 32.855 81-244 e-mail: urlaub@stiftgoettweig.at Available from Monday to Friday, 8 a.m. to 6 p.m. |
| Catering Abbey Restaurant | Martin Scherhag and his kitchen & service team Tel: +43.(0)27 32.855 81-225 Fax: +43.(0)27 32.855 81-388 e-mail: restaurant@stiftgoettweig.at Available from Monday to Friday, 8 a.m. to 4 p.m. |
| Event Management Seminars & Congresses | Patricia Erasums Tel: +43.(0)27 32.855 81-323 Fax: +43.(0)27 32.855 81-388 e-mail: event@stiftgoettweig.at |
| Retreats & Religious Exercises | Father Maximilian Krenn and the Retreat's House Team Tel: +43.(0)27 32.855 81-333 e-mail: kurse@stiftgoettweig.at |
| Youth House | Martina Reisinger and the Youth House Team Tel: +43.(0)27 32.855 81-314 e-mail: info@jugendimstift.at |

HOW TO REACH GÖTTWEIG ABBEY

| | |
|------------------------------|--|
| By Car | Highway A1 from Vienna (80km) or from Salzburg (220 km) to St. Pölten – Exit Direction Krems (20 km), S 33 follow direction to Stift Göttweig; S 5 from Vienna (85 km) |
| By Train | From Vienna and Salzburg: Via Westbahn to St.Pölten, then train to Paudorf or Furth. From Vienna alternatively: "Franz-Josefs-Bahn" to Krems, Rail connection to Furth or Paudorf. For connections to Stift Göttweig, please check the schedule provided by www.vor.at |
| By Plane | Airport Vienna – Schwechat (101 km) Airport Linz (160 km) Airport Salzburg (250 km) |
| By Ship | Liners and charter ships to Krems/Stein harbor. For connections to Stift Göttweig, please check the schedule provided by www.vor.at |
| By Bike & on Foot | A side trip from the Danube Cycle Way, which is well worth it! Pilgrims from the St. James Path will get directly to Stift Göttweig. |
| Barrier-Free | The Monastery's Courtyard and Church are barrier-free accessible from the south entrance. Please follow the signs. Possibility to get off the bus at the south entrance and space for the bus to turn around! The Restaurant situated in the north is also barrier-free. Please follow the signs to the Restaurant. Possibility to get off at the ramp! |

PARKING

By Car

Follow the parking signs – in the north of the Abbey are parking lots on 2 levels situated, more parking space available in the south and in the east.

There are 350 parking lots available.

By Bus

Follow the parking signs, parking lots are situated in the north (1st level) and in the east of the Abbey.

There are 6 lots for the busses available.

THE ABBEY'S GIFT SHOP

Opening Hours:

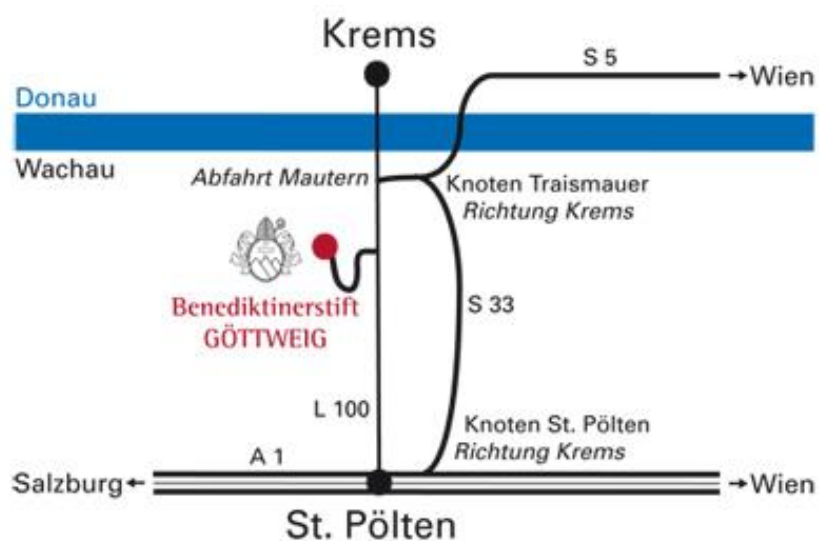
March to December

Daily from 8 a.m. to 6 p.m.

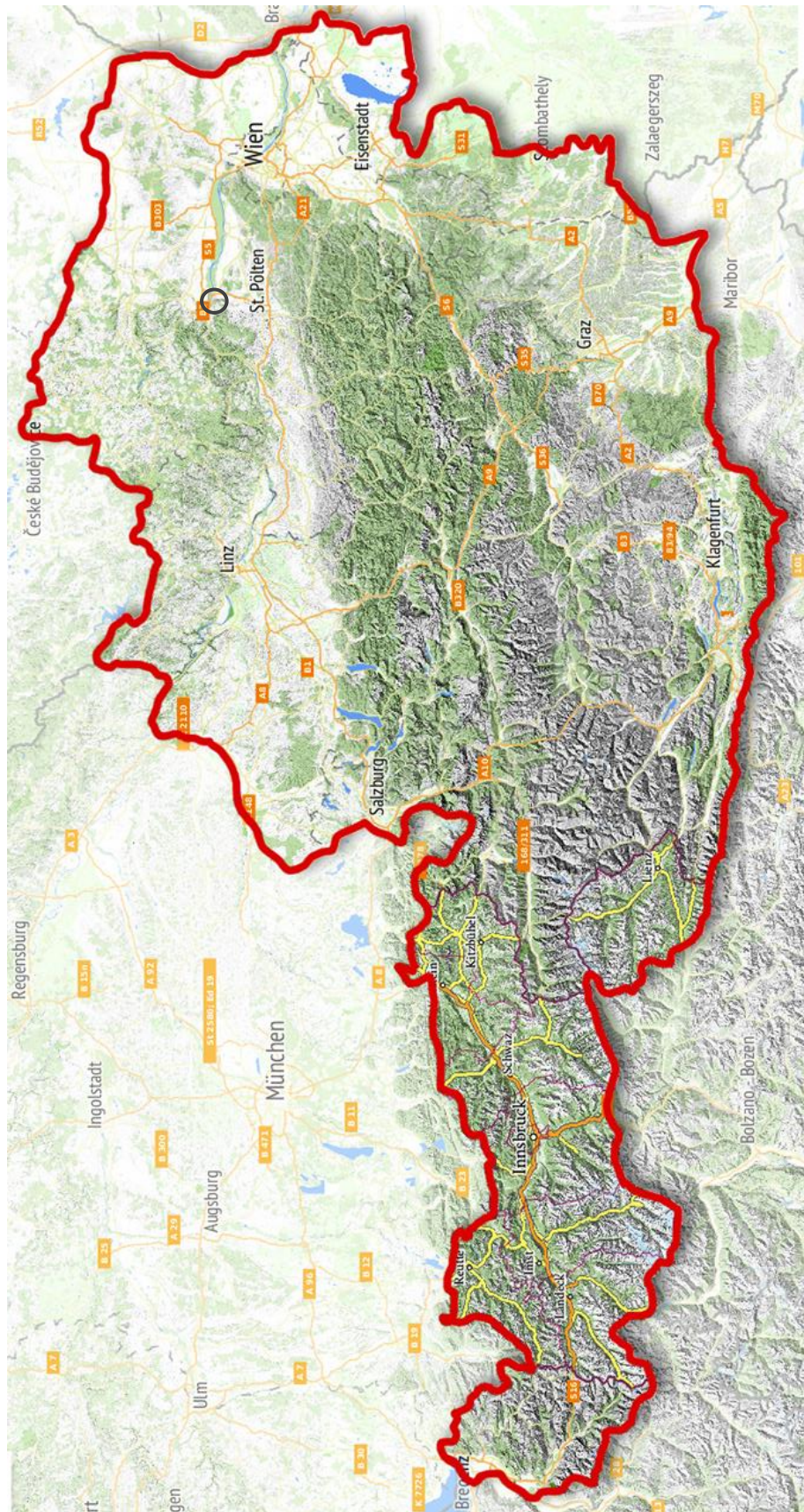
Devotional Objects, Souvenirs, a large selection of Books, Jams, Liquors, Apricot Brandy, T-Shirts, Caps, Umbrellas, Pens, exhibition catalogues and much more.

Quality wines from the Vineyards of Göttweig Abbey.



MAP



OVERVIEW MAP



PLACES OF INTEREST

| | |
|--|--|
|  <p>United Nations Educational, Scientific and Cultural Organization</p>  <p>Wachau World Heritage Site since 2000</p> | <ul style="list-style-type: none">• Museum in the Imperial Wing• Imperial Staircase with Ceiling Fresco by Paul Troger• Imperial Rooms• Abbey Church• Apricot and Herb Garden• Path of Sustainability• Permanent Exhibition (about the life and work of the Monks of Göttweig Abbey)• Baroque Abbey Complex |
| <p>In the Surroundings:</p> | <ul style="list-style-type: none">• Kienzl-Museum in the so-called Hellerhof in Paudorf (a parish of Göttweig)• Wine Experience Tour "Wine Sense" in Sandgrube 13, Winzer Krems/Vintners of Krems, www.winzerkrems.at• Art Mile and Cartoonmuseum Krems, www.kunstmeile.at• Brandner Shipping Company, Krems-Stein, www.brandner.at• LOISIUM World of Wine Experience, Langenlois, www.loisium.com• Kittenberger Adventure Gardens, Schiltern, www.kittenberger.at• www.ausflug.at |
| <p>Being Active:</p> | <ul style="list-style-type: none">• Nature Trail: "The World of Wood" – Experience in Göttweig, natural forest trail to the Sequoias and to the Arboretum of Göttweig• Austrian St. James Trail, starting point of the section Göttweig – Melk (along the Wachau Valley)• Monastery Göttweig is situated directly on the Danube Cycle Way Passau-Vienna, follow the signs beginning at Mautern |

SIGHTSEEING

Museum in the Imperial Wing



| | |
|---|---|
| Opening Hours 2024: | Middle of March – 23rd December Visit without guided tour daily 10 a.m. to 6 p.m. (last entrance 5 p.m.) Audio-guides are available in various languages. |
| Guided Tours for Groups (only with announcement) available all year: | Guided Tours offered in: <ul style="list-style-type: none">• English• French• Italian• Slovak• Czech |

Entrance Fees for Individual Travelers inc. Audio-Guide:

| | |
|--|-----------|
| Adult | EUR 14,00 |
| Seniors | EUR 13,00 |
| Reduced Entrance Fees (Children above 6 years old, Students with ID card, Recruits up to 25 years, Persons with Special Needs) | EUR 9,00 |
| Family Ticket (Parents with Children up to 16 years) | EUR 25,00 |

Entrance Fees for Groups

| | 20 or more persons The 21st person is free of charge! | up to 19 persons |
|--|---|------------------|
| Abbey Museum - Imperial Staircase with Ceiling Fresco by Paul Troger and Royal Chambers (per person/duration 1 hours) | EUR 13,00 | EUR 14,00 |
| Fee for Special Tours Imperial Staircase, Baroque Royal Chambers and Abbey Church (per person/duration 1,5 hours) | EUR 17,00 | EUR 18,00 |
| Short Tours <ul style="list-style-type: none"> • Attic-Tour or • Museum-Tour or • Church-Tour (duration 30 minutes) | EUR 11,50 | EUR 12,50 |
| School Classes without Guided Tour maximum 30 pupils + 1 teacher | EUR 60,00 | |
| Additional Fee for Guidance per pupil/teacher, duration 1 hour | EUR 3,50 | |
| Additional Charge for Guided Tours outside opening hours | EUR 60,00 | EUR 60,00 |

SPECIAL OFFERS:

ORGAN CONCERT IN THE ABBEY CHURCH

(all year, needs to be reserved in advance)

All-inclusive Price
(per approx. 25 minutes perfor-
mance)
EUR 550,00

Göttweig Abbey has an old organ tradition.
Already in 1600 the Abbey owned two organs,
nowadays you can hear the mechanical-stop-
organ with 45 registers, 3 manuals and pedal.

GROUP PACKAGES:

ADVENT IN GÖTTWEIG

Christmas Market inside the heated interior of the Abbey, concert inside the heated Abbey Church (30th November. – 8th December 2024, 10 a.m. – 5.30 p.m.)

| | |
|--|---|
| <p>Entrance fee: EUR 4,00 SPECIAL OFFER bookable Monday - Friday: incl. entrance fee and 2-course menu EUR 23.00</p> <p>You can find the program on www.stiftgoettweig.at</p> | <p>Pre-Christmas magic on Göttweig Mountain, Advent Market in the "Brunnensaal", daily Advent Concerts in the Abbey Church, Performance "Turmblasen" (Brass Music), Hot Punch Stalls on the Restaurant Terrace etc.</p> |
| <p>Package 1: EUR 13,00 (Duration: 3 hours) SPECIAL OFFER bookable Monday - Friday: including 2-course menu EUR 33.00</p> | <ul style="list-style-type: none">▶ Individual Visit of the Advent in Göttweig▶ Entrance with Guided Tour to the Museum in the Imperial Wing |
| <p>Package 2: EUR 13,00 (Duration: 3 hours) SPECIAL OFFER bookable Monday - Friday: including 2-course menu EUR 33.00</p> | <ul style="list-style-type: none">▶ Individual Visit of the Advent in Göttweig▶ Advent Concert in the Abbey Church at 2.30 p.m. (Duration approx. 60 minutes) |
| <p>Package 3: EUR 24,00 (Duration: approx. 5 hours) SPECIAL OFFER bookable Monday - Friday: including 2-course menu EUR 40.00</p> | <ul style="list-style-type: none">▶ Individual Visit of the Advent in Göttweig▶ Entrance with Guided Tour to the Museum in the Imperial Wing▶ Advent Concert in the Abbey Church at 2.30 p.m. (Duration approx. 60 minutes) |
| <p>Package 4: EUR 44,00 (Duration: approx. 5 - 6 hours)</p> | <ul style="list-style-type: none">▶ Entrance with Guided Tour to the Museum in the Imperial Wing▶ Individual Visit of the Advent in Göttweig▶ Lunch in the Abbey Restaurant (3 course menu)▶ Advent Concert in the Abbey Church at 2.30 p.m. (Duration approx. 60 minutes) |

GROUP PACKAGES:

Our special offers for your visit on Wednesday and Thursday (20 persons or more):

GÖTTWEIG ABBEY FOR SENIOR CITIZENS

| | |
|-----------------------------|--|
| Package 1: EUR 22,00 | <ul style="list-style-type: none">▶ Guided Tour in the Museum in the Imperial Wing▶ Coffee Break in the Abbey Restaurant (1 slice of Benediktiner-Cake and 1 cup of coffee) |
| Package 2: EUR 34,00 | <ul style="list-style-type: none">▶ Guided Tour in the Museum in the Imperial Wing▶ 2-course menu in the Abbey Restaurant |

GÖTTWEIG ABBEY AND APRICOT TASTING “WACHAUER MARILLE”

Visit Göttweig Abbey and enjoy the Tasting of our Apricot Products with the outstanding flavor of the „Wachauer Marille”

| | |
|------------------------------|---|
| EUR 26,80 | <ul style="list-style-type: none">▶ Guided Tour through the Apricot and Herb Garden▶ Tasting of Apricot Sparkling Wine or Apricot Nectar and Apricot Brandy or Apricot Liqueur▶ Short Video about the Marille (Apricot)▶ Short Guided Tour through the Abbey (Optional: Imperial Wing-Tour or Abbey Church-Tour or Attic-Tour) |
| Additional: EUR 11,50 | <ul style="list-style-type: none">▶ Coffee Break in the Abbey Restaurant (Coffee and Apricot Dumpling) |

GROUP PACKAGES WITH OUR BUSINESS PARTNERS:

Our special offers, which we have created for you together with our business partners of the region *(available for groups of 20 persons or more)*

Göttweig Abbey and Kittenberger Adventure Gardens

Entrance to Göttweig Abbey – Museum in the Imperial Wing, Entrance to the Kittenberger Adventure Gardens with 40 different garden themes

► Price per person on demand



Göttweig Abbey and „Sonnentor“

Entrance to Göttweig Abbey – Museum in the Imperial Wing, Guided Tour and tasting at „Sonnentor“

► Price per person on demand



Göttweig Abbey and Art Mile in Krems

"Cloister and Art" including Guided Tour through Göttweig Abbey (1 hour), visit of the Art Gallery in Krems or visit of the Cartoonmuseum in Krems

► Price per person on demand



Göttweig Abbey and World of Wine Experience Tour Sandgrube 13

"Cloister and Vintners of Krems" including Guided Tour through Göttweig Abbey (1 hour), Wine Experience Tour in Sandgrube 13 (Vintners of Krems)

► Price per person on demand



Göttweig Abbey and Krems

"UNESCO Worldheritage Tour at the Gate to Wachau Valley" including Guided Tour through Göttweig Abbey (1 hour) and Guided Tour through the historic city of Krems or Stein

► Price per person on demand



Göttweig Abbey and Brandner Shipping Company

"Kingdom of heaven" including guided tour through Göttweig Abbey (1 hour) and boat trip *(available during the boat trip season 2024)*

► Price per person on demand



Göttweig Abbey and Brandner Shipping Company

"Waves of the Danube" including boat trip and guided tour through Göttweig Abbey (1 hour)

(available during the boat trip season 2024)

► Price per person on demand



Göttweig Abbey and LOISIUM World of Wine

"Cloister and Wine" including entrance to Göttweig Abbey, guided cellar tour in the LOISIUM "World of Wine" incl. 1 free wine sample

► Price per person on demand



ACCOMMODATION

“TO BE A GUEST IN OUR MONASTERY”

Rooms

21 Double rooms/Twin rooms
15 Single rooms with extra bed with extra bed by request
NEW: Room with Wachau Valley View

The guestrooms are single or double rooms, all equipped with shower/WC. In some single and double rooms we can add one bed. The non-smoking rooms are located in the silent-area of the St. Altman's Retreat House, which you can find in the Courtyard opposite the Abbey Church. We ask for your understanding, that dogs or other pets are not allowed.

Room rates

(per room & night stay incl. breakfast, excl. city tax)

Double room

from EUR 135,00

Single room

from EUR 83,00

Rooms for Connoisseurs



The modern, bright and friendly furnished rooms convey the history and tradition of the monastery to the guests. Each of the rooms is designed with a picture and information about a saint. In some rooms you can enjoy the unique panoramic view of the surrounding villages of the UNESCO World Heritage region of Wachau.

Room rates

(per room & night stay incl. breakfast, excl. city tax)

Double room “Comfort”

from EUR 155,00

Double room “Wachau View”

from EUR 170,00

Check-In possible from 3 p.m. to 5 p.m., for later arrival please contact us in advance. Check-Out until 10 a.m.

RESTAURANT AT GÖTTWEIG ABBEY – CUISINE WITH PANORAMIC VIEW

Enjoy the unique panoramic view over the Wachau – let the team from Kitchen & Service spoil you – visit the Göttweig Abbey Restaurant! Take a break in the elegant panorama hall, the breezy orangery and the cosy dining rooms "Prälatenstüberl", or in the "Marillenstüberl". The restaurant terrace offers an unique view towards the Wachau valley.

Regional monastery cuisine with modern influences and wines of the own vineyards. Whether it's a wedding, family celebration, seminar, congress, company event, incentive, travel groups, summer barbecue or simply a cosy get-together for two the Restaurant awaits you.

For opening hours,
please contact us via
www.stiftgoettweig.at

For groups of ten or more persons, we ask you to make a reservation in advance, to be able to offer you a perfect stay in the Abbey Restaurant.

Classical ambience for

- ▶ Weddings and Family Events
 - ▶ Banquets, Meetings and Company Events
 - ▶ Congresses, Seminars and Conferences
 - ▶ Christmas Parties
- ... up to 320 persons

**Seats available
in the Abbey Restaurant:**

Orangery and "Salettl": up to 100 persons
"Marillenstüberl": up to 50 persons
"Prälatenstüberl": up to 20 persons
"Apostelstüberl": 8 to 12 persons
"Panoramasaal": up to 120 persons
Sun Terrace: up to 150 persons

OUR SPECIAL OFFER:

Coffee Break in the Abbey Restaurant or on our Sun Terrace
Homemade "Benedictine Cake" following an old recipe and a cup of coffee

Price per person EUR 9,00

Commented Wine Tasting
3 wines of our own vineyard
Price per person EUR 13,90

Our restaurant provides different set meals for groups with 20 persons or above, which guarantees best quality and quick service. We kindly ask you to announce your meal choices order at least 2 hours before arrival at the restaurant.

We gladly grant you a free seat for every 21st person.

SEMINAR – EVENTS WITH VIEW

Use this traditional place of encounter to make your event "something special"!

| | |
|--|--|
| Company Events | Enjoy with your guests the outstanding atmosphere of the abbey and our event area. We offer you many possibilities – conference, congress, seminar, confinement, meeting, workshop, speech, presentation, company anniversary, incentive, Christmas party, concert, gala dinner, wine tasting, exhibition etc. |
| Weddings & Private Parties | Göttweig Abbey offers you an outstanding atmosphere for your event – Wedding Meal, Birthday or other important Events. |
| Göttweig Abbey – your Eventlocation | Indoor or Outdoor – for one hour or for some days – up to 4.500 persons – nearly everything is possible. We are happy to help you to plan and realize your events. |

| | |
|--------------------|--|
| Event area: | "Brunnensaal" (up to 300 persons) "Sommerrefektorium" (up to 150 persons) Conference rooms – "Donau" and "Kamptal" (each up to 50 persons) |
| Equipment: | Beamer, Blue Ray, LCD Projector, DVD-Player, screen, flip chart, sound and lighting system, telephone mainlines, broadband internet |

YOUTH HOSTEL – GIVES YOUNG PEOPLE SPACE

The youth hostel of Göttweig Abbey offers young people the perfect possibility to spend time together. The antique rooms are new decorated and offer together with the adjoining garden a nice place for a comfortable, reflective and creative get-together.

The experience of a cloister and the life of the monks is one of the main topics. The young people can take part on the common prayers of the monks or on an exciting "Klosterralley" as well as on guided tours through the monastery. They can ask the monks questions they always wanted to ask. The surrounding nature offers on the one hand quiet and silence and on the other hand space for games in the forests. Quite often the day ends with a romantic bonfire. NEW: The beach volleyball place and the sports ground offers place for animation.

The youth hostel offers more than 30 beds, one conference room (equipped with Beamer, LCD projector, flip chart, whiteboard etc.) and a lot of entertainment facilities (table tennis, board games, tabletop soccer, billiards etc.), as well as a gym and a chapel. A big kitchen offers the possibility of self-supply or you can order low-cost meals provided by our restaurant kitchen.

ST. ALTMANN'S RETREAT HOUSE

The St. Altmann's Retreat House was built on the occasion of the 900th anniversary of Abbey Göttweig. In addition to the educational- or meeting-rooms the Saint Altmann's Retreat House stands out as a place for a retreat, where the spiritual aspect has priority. If you are looking for spirituality, that is the place to stay.

One focus of our house lies on individual retreats: that's where our guests retreat for 3 to 5 days in silence and are spiritually accompanied by one of our fathers of Göttweig. Following the main idea of St. Ignatius of Loyola the retreat helps you to sort out your life and to perceive your relationship to God and the fellow human beings. Retreats give you the possibility to discover the truth about yourself, to recognize it and to take it seriously.

The declared goal of retreats therefore is the new human being, who is renewed by the Holy Spirit inwardly, who enjoys life, who leaves all the unnecessary burdens behind and who follows the word of Christ: "I came, so that they have plenty of life." (Joh 10,10).

For the special offers for those who quit the ecclesiastical community, the divorced, the remarried, as well as retreats for managers, Göttweig Abbey is often called "a place of encounter".

Among the various programs you can find offers to deepen the knowledge of the bible, the holy life and to practice prayer, but also for people with conflicts in their lives, have a look around, there might be something that interests you.